

Connah's Quay Low Carbon Power

Environmental Statement Volume III Figure 12-2: Designated Sites with Marine Ecology Features

Planning Inspectorate Reference: EN010166

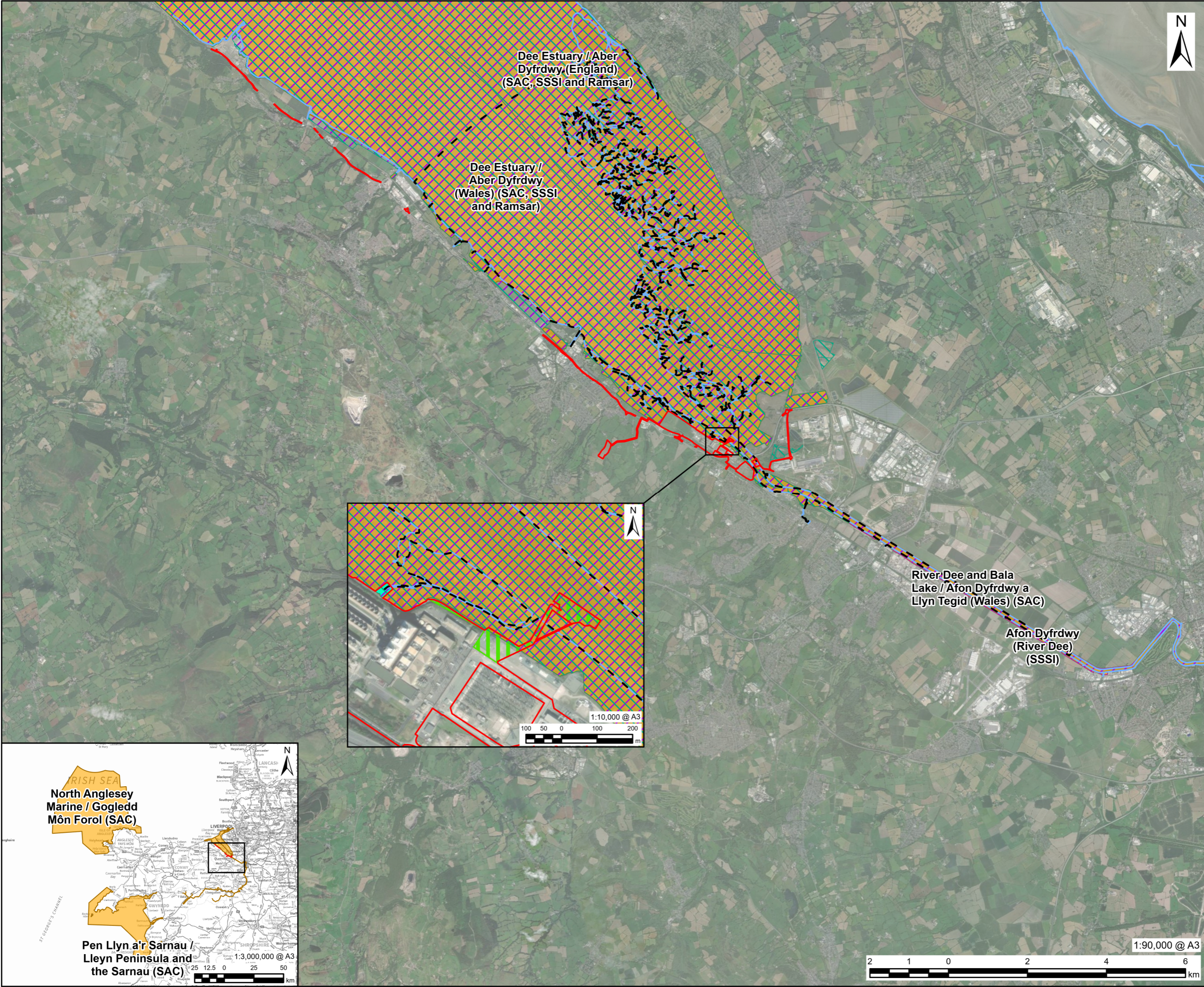
Document Reference: EN010166/APP/6.3

Planning Act 2008 (as amended)

Infrastructure Planning (Applications: Prescribed Forms and Procedure) Regulations 2009 - Regulation 5(2)(a)

Revision 00

August 2025



PROJECT

Connah's Quay Low
Carbon Power

CONSULTANT

AECOM Limited
The Colmore Building
Colmore Circus, Queensway
Birmingham, B4 6AT
www.aecom.com

LEGEND

- Order limits
- Marine Ecology Study Area (10km)
- Surface Water Outfall Area
- Water Connection Corridor (WCC)
- Mean High Water Springs (MHWS)
- Site of Special Scientific Interest (SSSI)
- Ramsar
- Special Area of Conservation (SAC)

NOTES

© Crown Copyright 2025. All rights reserved.
Ordnance Survey Licence AC0000808122.
Contains Ordnance Survey Data © Crown
Copyright and database right 2024.
Contains Natural Resources Wales
information © Natural Resources Wales and
Database Right. All rights Reserved.
Contains Ordnance Survey Data. Ordnance
Survey Licence number AC0000849444.
Crown Copyright and Database Right.
© Natural England copyright. Contains
Ordnance Survey data © Crown copyright
and database right 2024.
Maxar, Microsoft, Earthstar Geographics

ISSUE PURPOSE

Environmental Statement

DATE

July 2025

PROJECT NUMBER

60717119

FIGURE TITLE

Designated Sites with Marine
Ecological Features

FIGURE NUMBER

Figure 12-2